

Lithe 55 CY surface cylinder

Design Features:

Mechanical

- Sleek and architectural appearance
- Interchangeable optics
- Built in LED Driver
- Comfort cut-off to reduce glare
- Unique linear conduit to eliminate the standard J-Box

LED/Optics

- LM80 rated Philips Luxeon M LED Array.
- Less than 9.6 watt Power consumption
- Input Voltage: see the ordering code information
- Lumen output: ≈ 600 (lm) delivered lumen
- CBCP : Spot 3233 cd/ Medium 868cd/ Wide 1082cd
- Color Temp.: Warm White 2700K, 3000K, 3500K & 4000K optional
- CRI: > 80 (90 CRI optional)
- Optics : Spot 12 deg. / Medium 22 deg. / Wide 42 deg. options
- Life span: 50,000 hrs based on 70% lumen maintenance
- No harmful ultra violet light, infrared wavelengths
- Warranty: 5 years

Electrical

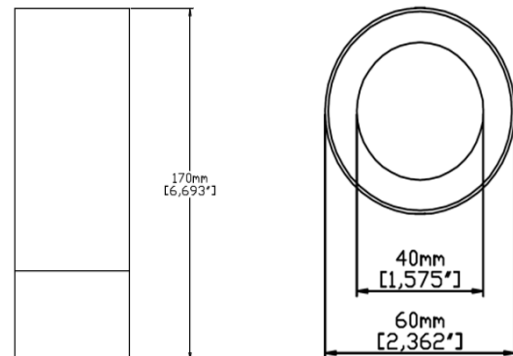
- Remote Class 2 driver, Power Factor > 0.90.
- TRIAC or 0-10V dimmable (optional)
- Overload & short circuit protection.

Approval / Certificate

- Dry and Damp Locations.
- RoHs compliant.
- IP44



Dimension:



Ordering Code Information:

PRODUCT	LUMEN	COLOR TEMPERATURE	FINISH	BEAM ANGLE	Input Voltage
LTE55CY	06	27	BKGD	S	1
LTE55CY LTHE55 Colour Surface Cylinder	06 600lm	27 (2700K) 30 (3000K) 35 (3500K) 40 (4000K)	WHB White Body Black Trim BKGD Black Body Gold Trim	S (Spot)/12 deg. M (Medium)/22 deg. W (Wide)/42 deg.	1 120V/TRIAC&ELV 4 220-240/TRIAC&ELV



Macron Associate Co.
ISO9001:2008



41146 #352, Perng-Yi Road, Taiping, Taichung, Taiwan R.O.C.

TEL : +886-4-22708357 FAX : +886-4-22774516

www.macrongroup.com

Copyright © Macron. All technical information in this document is subject to change.

VER.1